

Essential Oils and Human Physiology

An Introduction to Clinical
Aromatherapy

Presented by Amanda Lattin
MA, MH, RA

ACHS.edu

AMERICAN COLLEGE OF HEALTHCARE SCIENCES



Defining an Essential Oil

The International Standards Organization (ISO) gives this definition:

An essential oil is a product obtained from natural raw material, either by distillation with water or steam, or from the epicarp of citrus fruits by mechanical processing, or by dry distillation. The essential oil is subsequently separated from the aqueous phase by physical means.

This describes how the essential oil is obtained, but provides no information on its nature.

ACHS.edu

AMERICAN COLLEGE OF HEALTHCARE SCIENCES



Defining an Essential Oil

Drs. Franchomme and Pénéol use the terms of photosynthesis to describe an essential oil:

Plant essences, in the physiological meaning of the term are most certainly true life essences, elaborated by the secretory cells of the plants that have tapped the photo-electric-magnetic energy of the sun and have converted it, with the intervention of enzymes, into biochemical energy in the form of highly diversified aromatic molecules.

ACHS.edu

AMERICAN COLLEGE OF HEALTHCARE SCIENCES



What Are Essential Oils?

- An essential oil is the **distilled, or expressed**, product of the volatile components synthesized by various plant tissues of a single plant species.
- The alchemist Paracelsus (1493-1541) coined the term **essence, which equated to spirit**. In alchemy, the term spirit refers to the personality or extract of something that retains the qualities of the original substance.
- The term **essential** was applied to these oils because they held the essence or fragrant part of the plant.

ACHS.edu

AMERICAN COLLEGE OF HEALTHCARE SCIENCES



Concentration and Potency

- Essential oils are highly concentrated forms of the plant or herb part from which they are derived.
- For perspective, 1 drop of essential oil can equal around 30 cups of herbal tea in terms of concentration.
- Essential oils can be up to 75 or 100 times more concentrated than the fresh herb.
- It takes 30 hand-picked blossoms or 2,000 petals to produced 1 drop of rose (*Rosa damenscena*) essential oil.

ACHS.edu

AMERICAN COLLEGE OF HEALTHCARE SCIENCES



Secondary Metabolites

- Are not necessary for the growth and propagation of the plant; however, plants would not survive without them
- Attract pollinators
- Attract beneficial insects to prey on the plant's predators
- Provide protection by repelling harmful insects and herbivores
- Serve as antibiotics and antimicrobial compounds for plants
- **Allelopathy**: prevent the growth of competing vegetation
- **Antitranspirant**: reduce the rate of the loss of water

ACHS.edu

AMERICAN COLLEGE OF HEALTHCARE SCIENCES



Where are essential oils found?

- Flowers: jasmine, rose, ylang ylang, neroli
- Leaves: citronella, lemongrass, petitgrain, peppermint
- Bark: cinnamon
- Inner bark or wood: sandalwood, cedarwood, rosewood
- Resin: myrrh
- Seed: fennel
- Fruit peel: bergamot, lemon, lime, orange, mandarin
- Root: ginger, vetiver, valerian
- Berries: juniper

ACHS.edu

AMERICAN COLLEGE OF HEALTHCARE SCIENCES



Our Definition of Essential Oil

- Extracted by various means, including steam and dry distillation or expressing from the plant material of a single species
- Secondary plant metabolites – serving various roles
- Volatile components of aromatic plants:
 - Can be flammable
 - Generally less dense than water
 - Generally non-polar and insoluble in water
 - Can be found in many plant parts depending on the species
 - Highly concentrated forms of the plant or herb

ACHS.edu

AMERICAN COLLEGE OF HEALTHCARE SCIENCES

2009



History of Distillation



ACHS.edu

AMERICAN COLLEGE OF HEALTHCARE SCIENCES



Main Methods of EO Extraction

- Water distillation
- Steam distillation
- Extraction with volatile solvents
- Hydro-diffusion
- Expression
- Enfleurage

ACHS.edu

AMERICAN COLLEGE OF HEALTHCARE SCIENCES



Key Apparatus Changes



- Sources of heat
- Use of steam
- Cooling condensers
- Modern-day use of computer calibration
- Specifics for each individual plant species
- This led to different types of distillation

ACHS.edu

AMERICAN COLLEGE OF HEALTHCARE SCIENCES



When It All Started

Increased availability of essential oils was a result of the advent of the techniques of chemistry in the 19th century. At the time essential oils became the object of intense scientific curiosity. In turn, efforts to elucidate complex structures, like that of pinene, fueled the development of chemistry as a whole.

ACHS.edu

AMERICAN COLLEGE OF HEALTHCARE SCIENCES



Main Categories of Essential Oils (EO) Constituents

- Terpenoids
- Phenols and phenyl propanoids
- Non-terpenoid aliphatic molecules
- Heterocyclic compounds

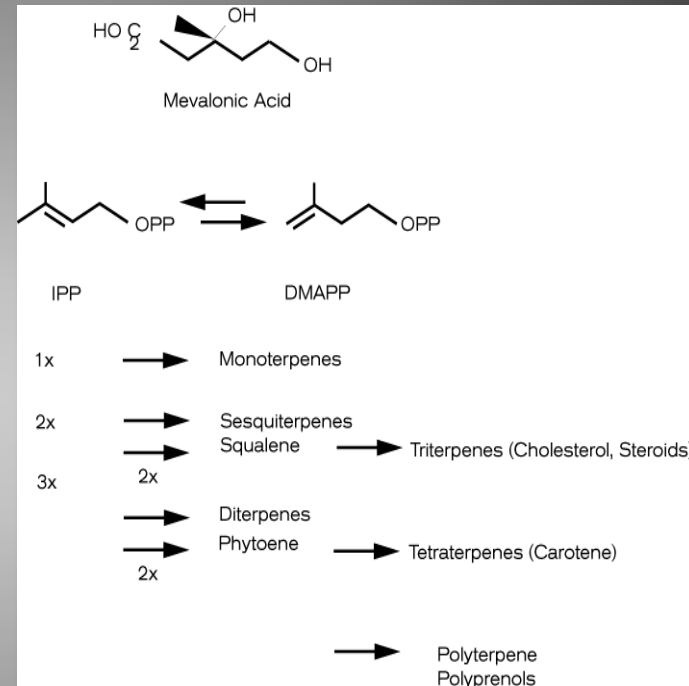
ACHS.edu

AMERICAN COLLEGE OF HEALTHCARE SCIENCES



Mevalonic Acid Pathway

The biosynthesis of terpenes, sesquiterpenes, and ultimately cholesterol and carotenoids is often referred to as **Mevalonic Acid Pathway**.



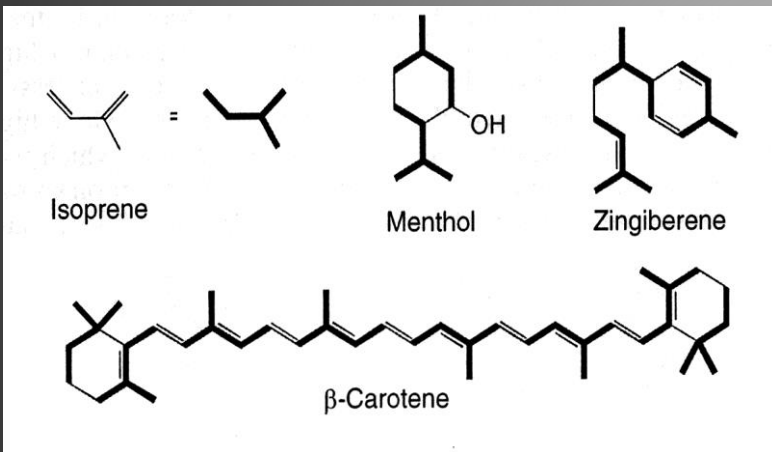
ACHS.edu

AMERICAN COLLEGE OF HEALTHCARE SCIENCES

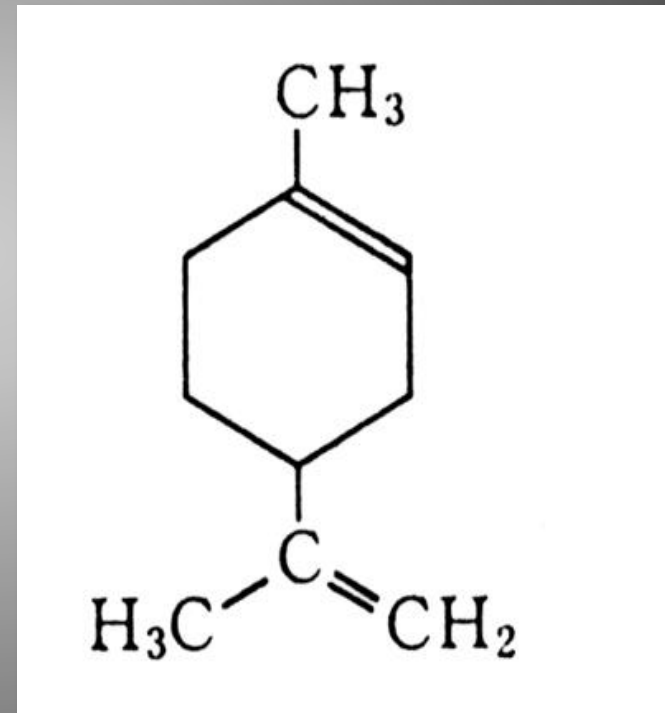


Isoprene Unit

Isoprene Example



Limonene Example



ACHS.edu

AMERICAN COLLEGE OF HEALTHCARE SCIENCES



Functional Group Families Derived From Mevalonic Acid Pathway

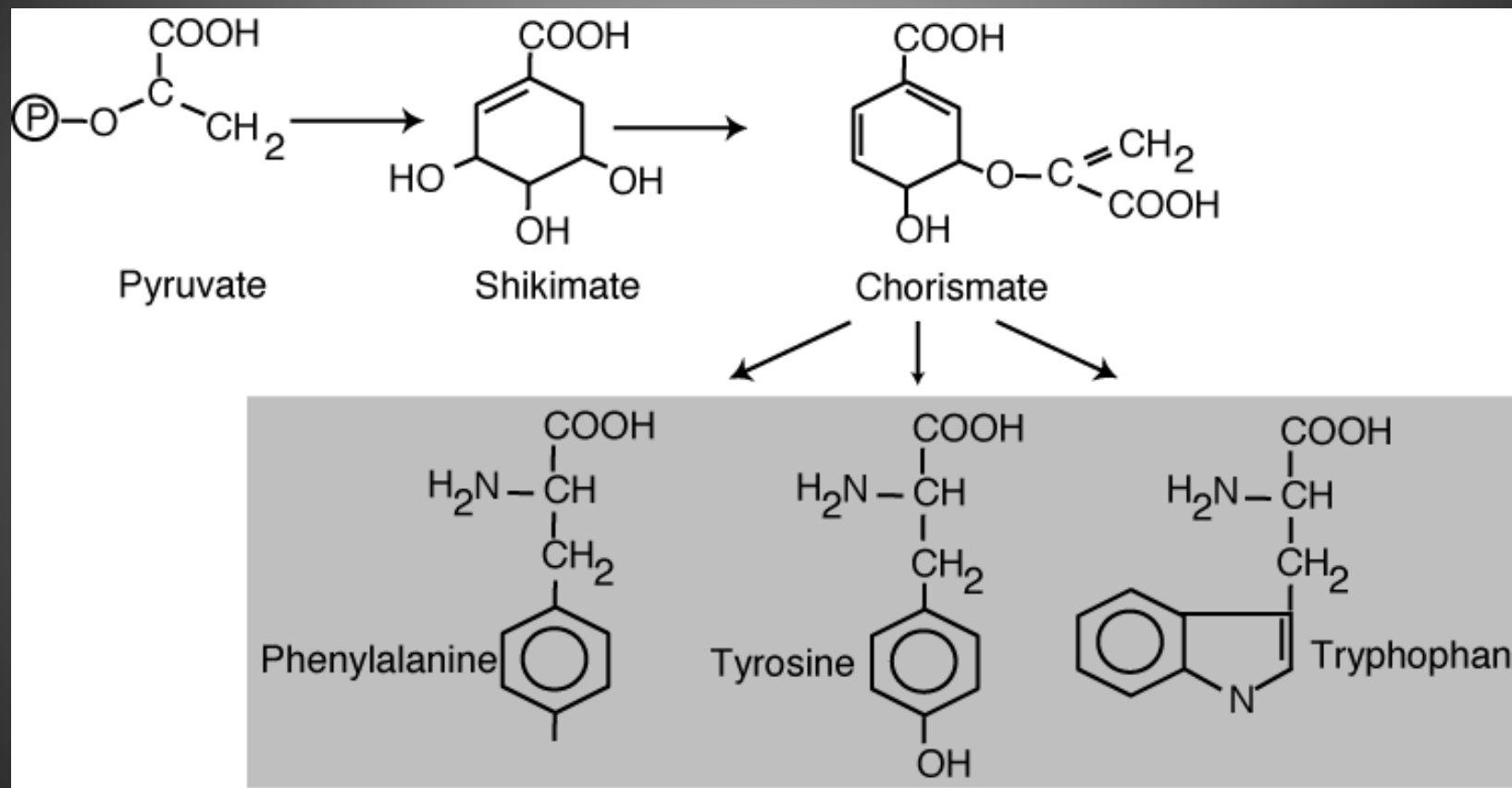
- Monoterpenes
- Sesquiterpenes
- Monoterpenols
- Sesquiterpenols
- Oxides
- Esters
- Aldehydes
- Ketones
- Lactones
- Chemopreventative
- Anti-inflammatory
- Anti-infectious
- Chemopreventative
- Antinociceptive
- Sedative
- Anti-infectious
- Wound healing
- Anti-inflammatory

ACHS.edu

AMERICAN COLLEGE OF HEALTHCARE SCIENCES



Phenyl Propanoids: Primary Metabolites

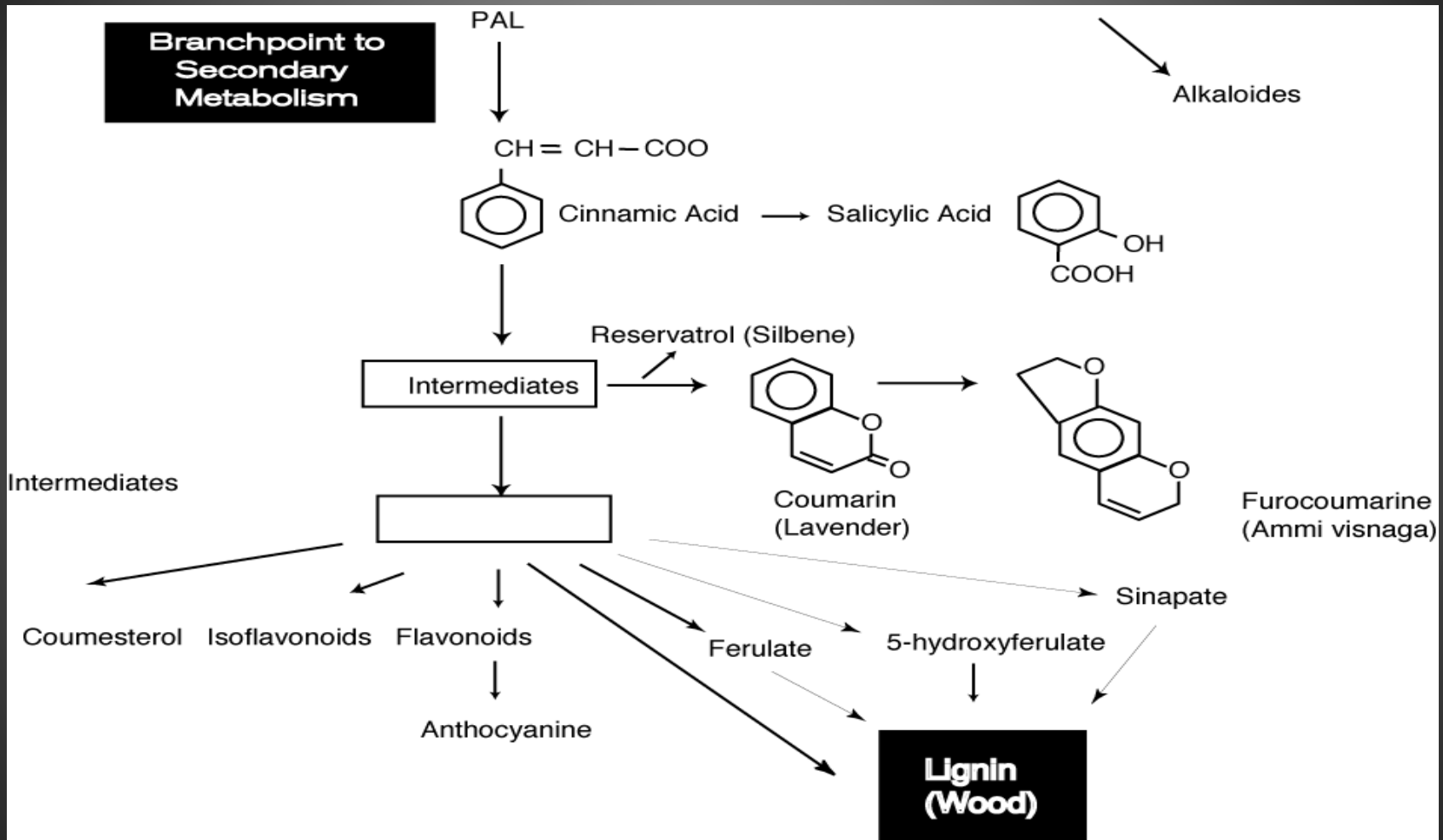


ACHS.edu

AMERICAN COLLEGE OF HEALTHCARE SCIENCES



Phenyl Propanoids: Secondary Metabolites



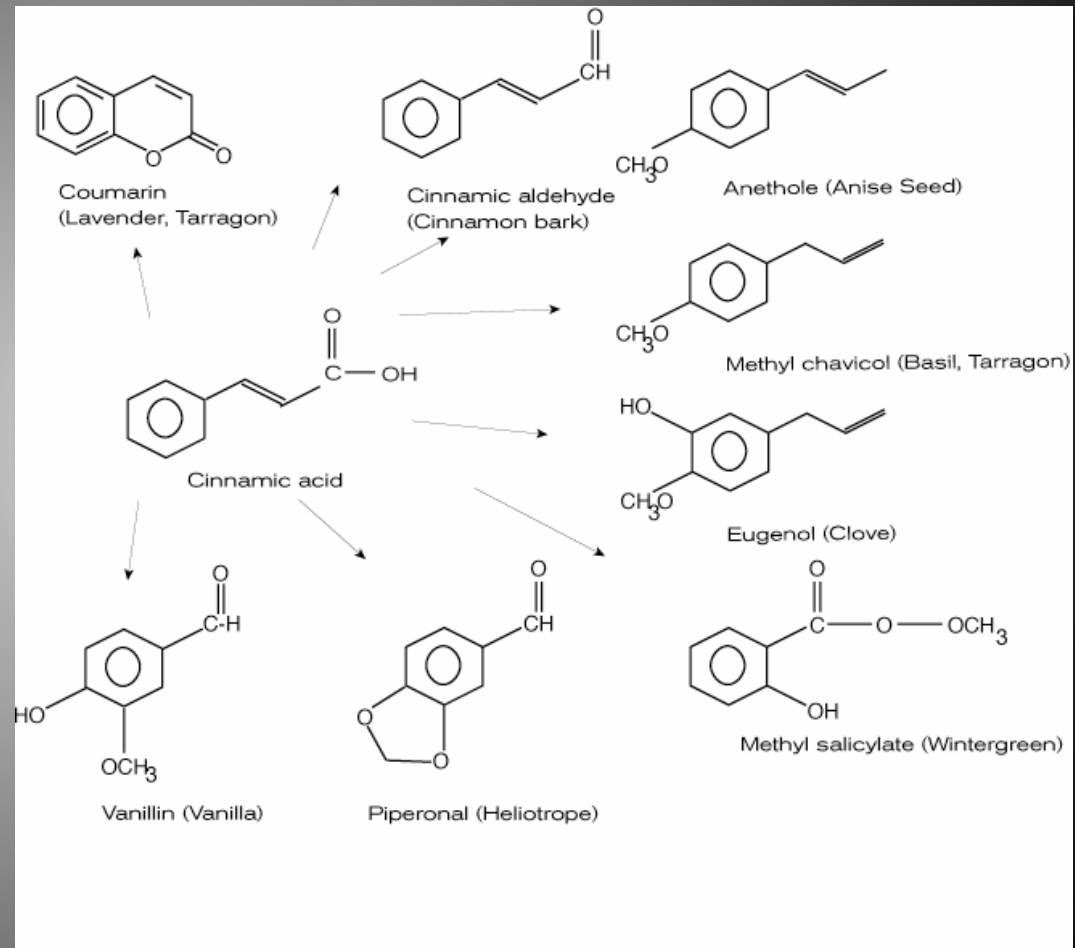
ACHS.edu

AMERICAN COLLEGE OF HEALTHCARE SCIENCES



Functional Groups Derived From Shikimic Acid Pathway

- Phenols-rubefacient, anti-infectious
- Phenyl methyl ethers-antispasmodic, anti-nociceptive
- Coumarins-antilymphoedemic

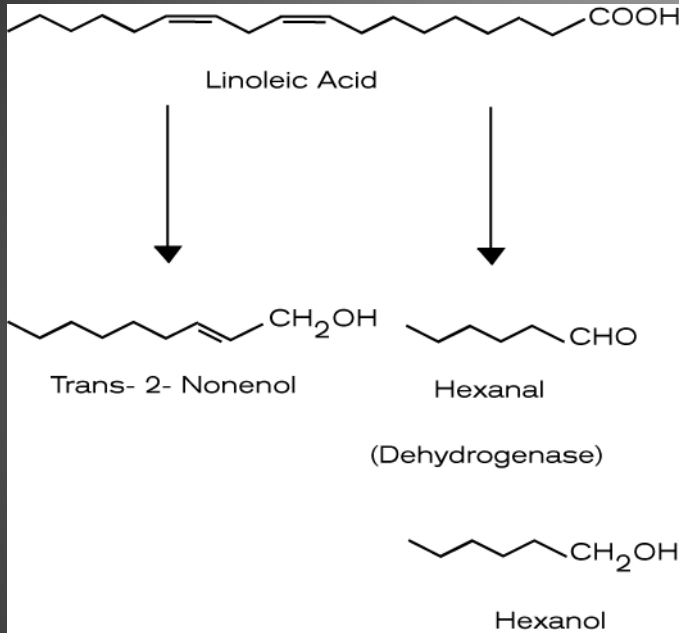


ACHS.edu

AMERICAN COLLEGE OF HEALTHCARE SCIENCES



Fatty Acid Metabolism



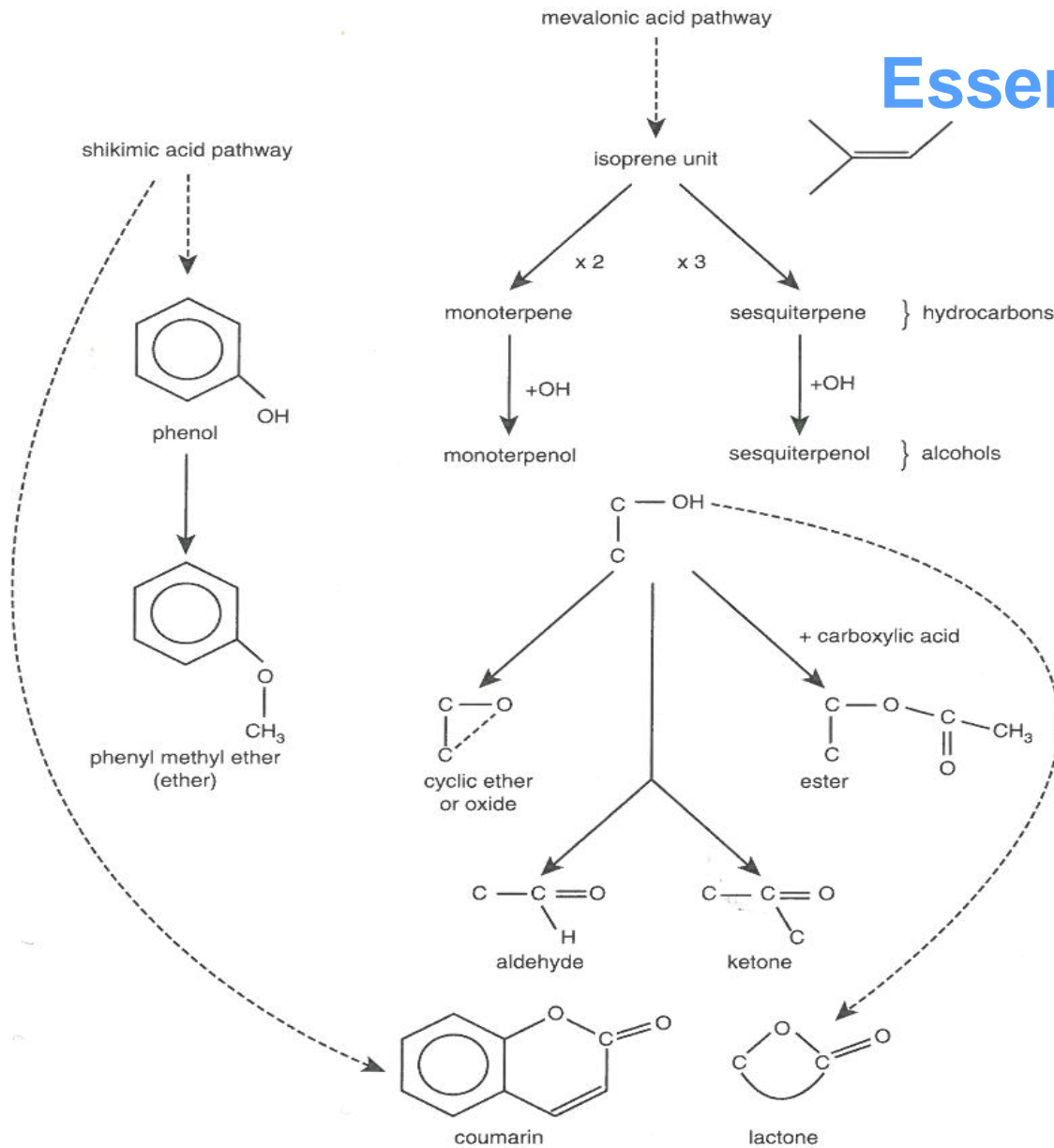
Molecules found in essential oils also arise from other biosynthetic pathways, e.g. certain high-impact trace components originate from the fatty acid metabolism.

ACHS.edu

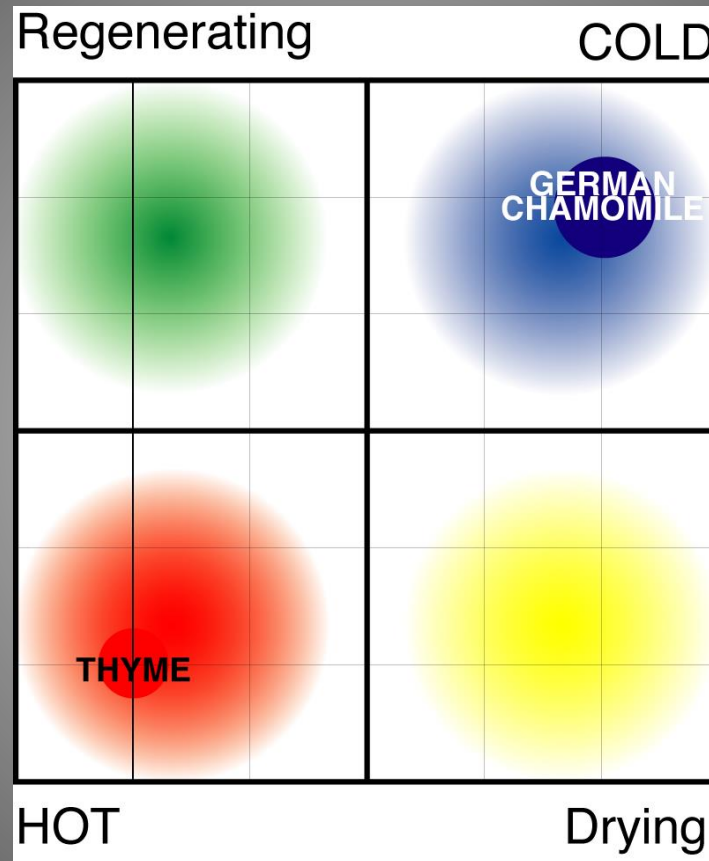
AMERICAN COLLEGE OF HEALTHCARE SCIENCES



Essential Oil Road Map



The Four Qualities

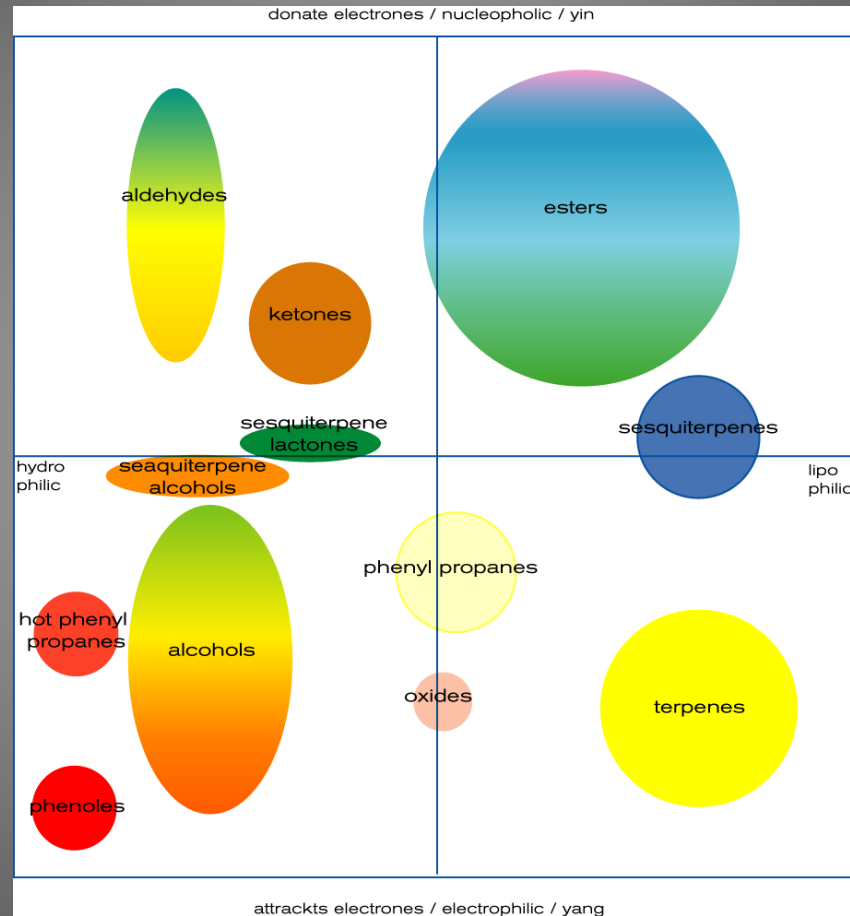


ACHS.edu

AMERICAN COLLEGE OF HEALTHCARE SCIENCES



The 12 Main Classes of Compounds

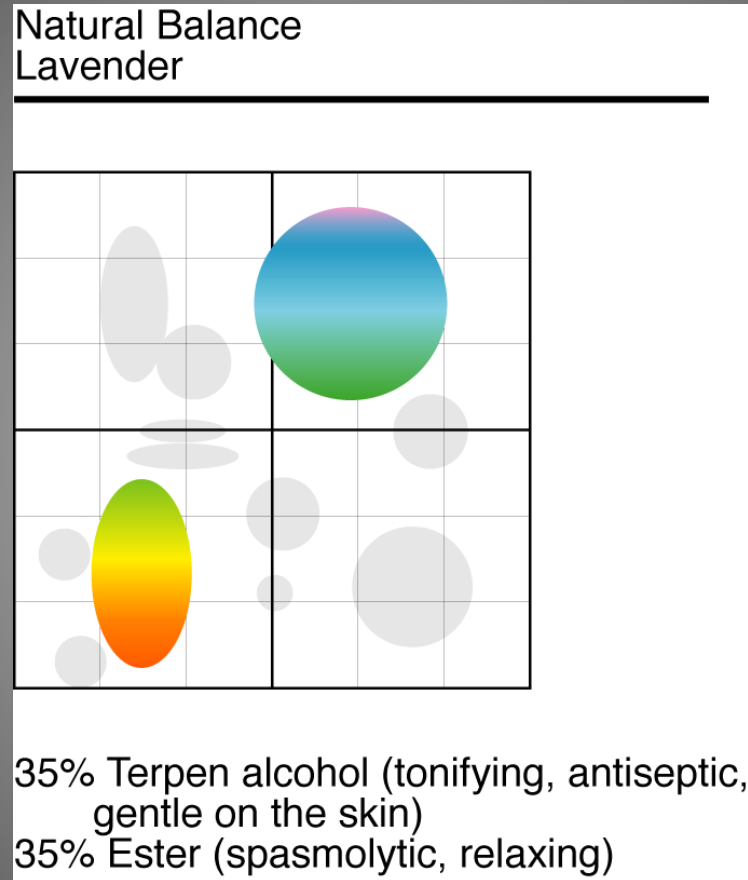


ACHS.edu

AMERICAN COLLEGE OF HEALTHCARE SCIENCES



Natural Balance Lavender

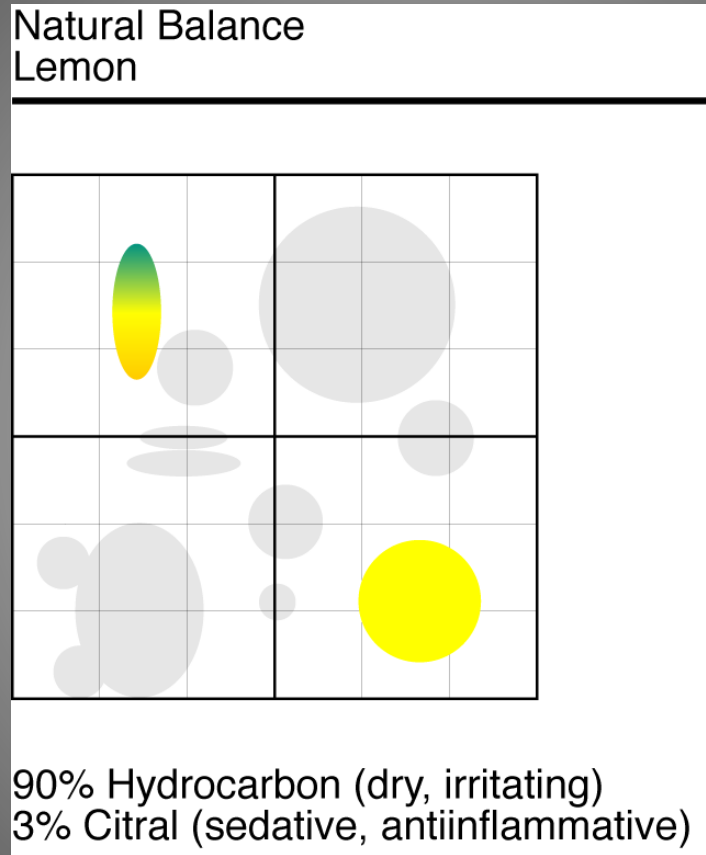


ACHS.edu

AMERICAN COLLEGE OF HEALTHCARE SCIENCES



Natural Balance Lemon



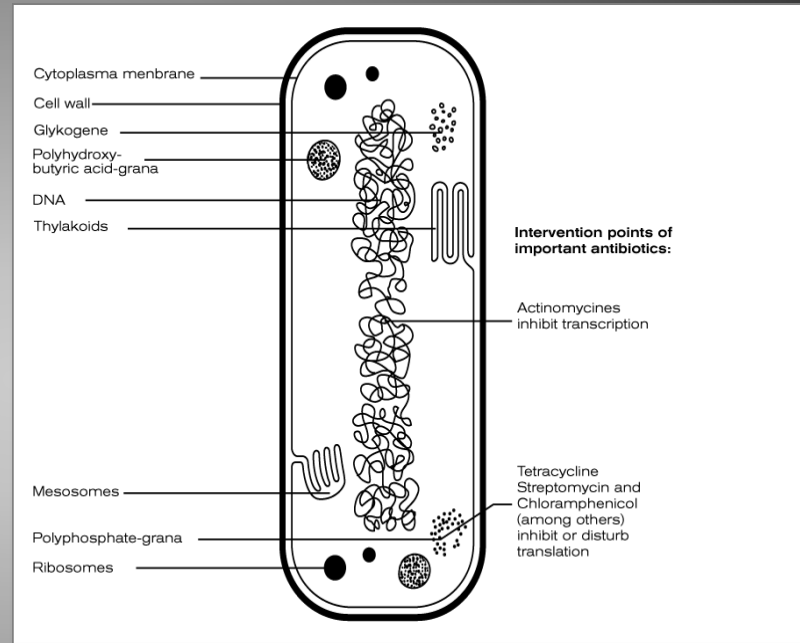
ACHS.edu

AMERICAN COLLEGE OF HEALTHCARE SCIENCES



The Prokaryotic Cell

- Tri-terpenes are an integral stability piece of the cell wall in prokaryotes.
- The presence of tri-terpenoids in prokaryotes demonstrates the **biochemical machinery** to produce essential oils and ultimately cholesterol and carotene.
- This has been a feature of living organisms since the beginning of life.



ACHS.edu

AMERICAN COLLEGE OF HEALTHCARE SCIENCES



Co-Evolutionary Language of Plant Secondary Metabolites

- Plants have evolved their **secondary metabolite language** to match not only their environment, but also the other plants, insects, and mammals they encounter.
- They have two sets of secondary metabolites:
 - One is polar, water soluble, and stays in the plant.
 - The other is non-polar and volatile enough to evaporate and interact with the outside world.

ACHS.edu

AMERICAN COLLEGE OF HEALTHCARE SCIENCES



Essential Oil Communication

- The first way essential oils (EOs) interact with human physiology is via **inhalation or smell**.
- In Western medicine, it used to be thought that smell did not have much impact beyond an emotional or hunger response.
- However, with breakthroughs in mapping the extensive impact of the olfactory system, we can now see the efficacy of this plant language.

ACHS.edu

AMERICAN COLLEGE OF HEALTHCARE SCIENCES



Smell Olfaction System

- The study of the science of smell is called osmology from the Greek word *osme* – smell, or odor.
- An estimated 1% of our genes are devoted to sensing aromas.
- Humans can distinguish between 2,000-4,000 different aromas.
- Our sense of smell is actually 10,000 times more sensitive than our sense of taste.

ACHS.edu

AMERICAN COLLEGE OF HEALTHCARE SCIENCES



Mechanism of Smell: Detection

- The molecule travels to the olfactory epithelium.
- The olfactory epithelium is a patch of tissue about the size of a small postage stamp in each nostril and is the primary reception area.
- It is packed with around 40 million sensory neurons.
- It is capable of detecting .0000000013 of an ounce of certain fragrances in a single breath of air.
- Each neuron has tiny finger-like projections called cilia.
- These are bathed in mucus.

ACHS.edu

AMERICAN COLLEGE OF HEALTHCARE SCIENCES



Mechanism of Smell: Detection

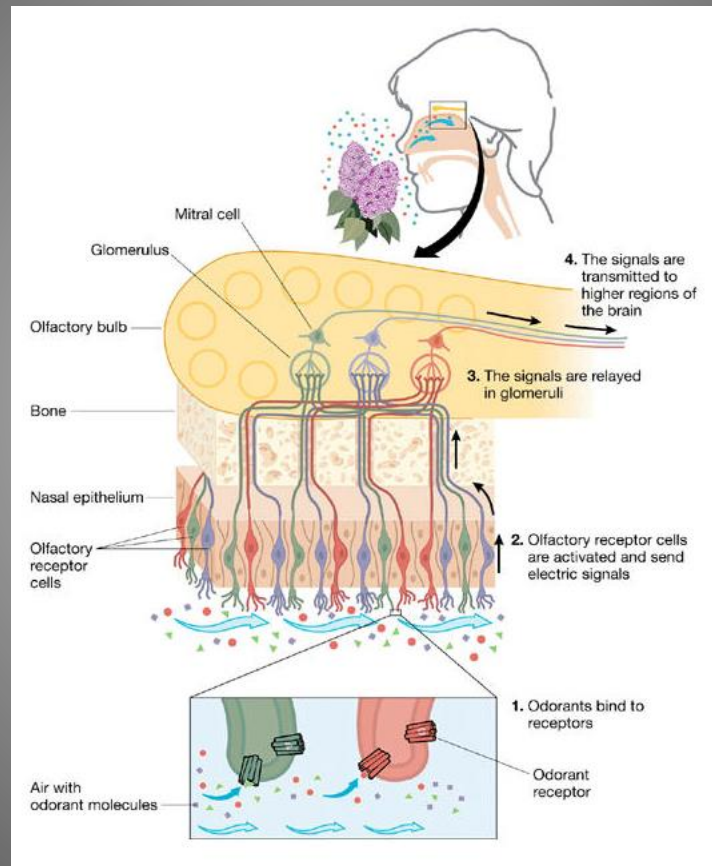
- Each cilia has many extremely small odor-binding proteins embedded in its outer membrane.
- These proteins actually 'reach' for the aroma molecules.
- They are also called odor-binding proteins and are the actual binding site where the odor molecule 'docks'.
- When a receptor reacts to an odor molecule, the entire neuron may respond by sending an impulse towards the brain.

ACHS.edu

AMERICAN COLLEGE OF HEALTHCARE SCIENCES



The Mechanism of Smell



ACHS.edu

AMERICAN COLLEGE OF HEALTHCARE SCIENCES



Mechanism of Smell: Transmission

- Once the odor molecule and the receptor protein bind, a sequence of events is initiated and the transmission phase begins.
- The latest theory about receptors is that each type of receptor could recognize a different aspect of an odor molecule. The transmission impulse sent from all of the activated receptors would create an aroma image or fingerprint for the brain.

ACHS.edu

AMERICAN COLLEGE OF HEALTHCARE SCIENCES



Mechanism of Smell: Perceive

- The sensory or receptor neuron is activated and sends a transmission of the 'aroma print' in the form of electro-chemical messages and transmits it along the olfactory neurons to the twin olfactory bulbs.
- Then the transmission moves on to other regions for perception. It travels via the olfactory tract to:
 - The olfactory cortex in the temporal lobe for conscious perception of smell.
 - The limbic system in the frontal lobe for interpretation, the hippocampus for memory, and amygdala for emotional response.

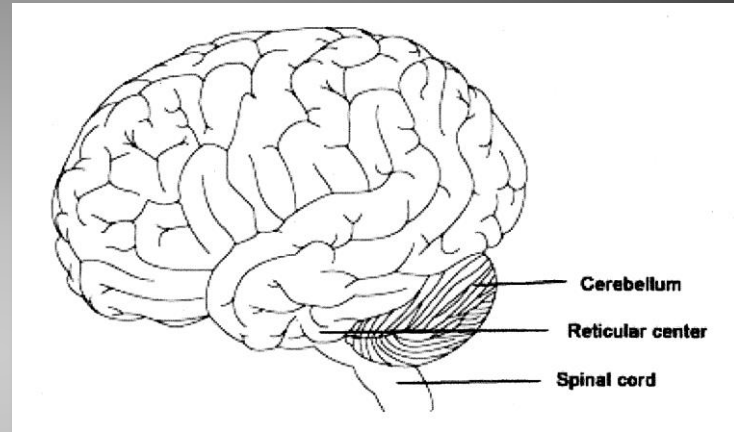
ACHS.edu

AMERICAN COLLEGE OF HEALTHCARE SCIENCES



The Mechanism of Smell: Perceive

- It also can travel to the hypothalamus, which triggers glandular responses.
- The reticular formation for visceral responses to smell.



ACHS.edu

AMERICAN COLLEGE OF HEALTHCARE SCIENCES



The Mechanism of Smell: Analyze

- The sense of smell accesses the reticular system, which integrates mind and body and connects them with emotions and memories.
- The reticular formation is composed of interlacing fibers and nerve cells, which form the central core of the brain stem.
- The link between emotion, memory, and fragrance is what is so effective in the process of emotional and spiritual healing.

ACHS.edu

AMERICAN COLLEGE OF HEALTHCARE SCIENCES



Mechanism of Smell: Analyze

- Depending on the aroma perceived, the limbic system may activate the hypothalamus, the human brain's center for basic drives and emotions.
- Signals from the hypothalamus stimulate the pituitary gland to produce various hormones that in turn affect all the glands in the body.
- This then triggers **physiological and emotional reactions**. These signals have **strong influences** on feelings and behaviors.

Other Olfactory Receptors

- Olfactory receptors have been found in other locations in the body
- Skin
- Intestines
- Sperm
- Frontal cortex

ACHS.edu

AMERICAN COLLEGE OF HEALTHCARE SCIENCES



Olfactory Receptors In Skin

- The skin contains receptors to interact with many aspects of the environment, especially in keratinocytes.
- Activation (antagonist) of the olfactory receptor OR2AT4 by synthetic sandalwood odorant Sandalore, produce stimulation of proliferation and wound-healing activity.

ACHS.edu

AMERICAN COLLEGE OF HEALTHCARE SCIENCES



Olfactory Receptors in the Intestines

- In experiments with rats, several olfactory receptors found in the duodenum were found to be selectively regulated by a high-fat diet fed to obesity prone rats.
- Researchers felt these receptors may play a part in sensing and managing dietary fat
- Important for future research in genetic predisposition to obesity.

ACHS.edu

AMERICAN COLLEGE OF HEALTHCARE SCIENCES



Olfactory Receptors in the Intestines

- Recent research is pointing to the olfactory bulbs working as an independent circadian rhythm system.
- The mechanism behind this has been unknown.
- Recently through real-time imaging of gene expression, a link was found.
- Vasoactive intestinal peptides had to be present for the olfactory bulbs to maintain circadian rhythm.

ACHS.edu

AMERICAN COLLEGE OF HEALTHCARE SCIENCES



Olfactory Receptors and Neurodegenerative Disease

- Up or down regulation of olfactory and taste receptors has been found in relation to several neurodegenerative diseases
- Parkinson disease, schizophrenia, Alzheimer's disease
- These changes in receptor expression are found in found in several parts of the brain, including the frontal cortex.

ACHS.edu

AMERICAN COLLEGE OF HEALTHCARE SCIENCES



Efficacy of Essential Oil Inhalation

- A 2012 study at the Shanghai School of Pharmacy demonstrated metabolic changes in rats after 10 days of essential oil inhalation at 45 min. per day.
- Brain tissue and urinary metabonomic analysis identified a number of altered metabolites in response to aromas intervention.

ACHS.edu

AMERICAN COLLEGE OF HEALTHCARE SCIENCES



Symmetry

Chirality Enantiomers... and why it matters.



ACHS.edu

AMERICAN COLLEGE OF HEALTHCARE SCIENCES



Chirality in Physiological Molecules

In enzymatic processes a specific molecule (substrate) is altered by attaching to a specific site on an enzyme. But the enzymatic reaction will only proceed if there is a **precise fit between substrate and enzyme**. In the case of chiral molecules, only one of the enantiomers will fit. The other enantiomer may not have biological activity.

ACHS.edu

AMERICAN COLLEGE OF HEALTHCARE SCIENCES



Enantioselective Gas Chromatography, University of Messina, Italy



Michelangelo Merisi, detto Il Caravaggio (1573-1610), Narciso, Roma, Galleria Nazionale

ACHS.edu

AMERICAN COLLEGE OF HEALTHCARE SCIENCES



Selected Enantiomeric Pairs

Different enantiomers of the same molecule usually have different odor:

Linalool (R)-(-) fresh, lily of the valley like
(S)-(+) slightly different odor

Limonene (R)-(-) pleasant, orange like
(S)-(-) faint mint, turpentine note

Carvone (R)-(-) herbaceous, reminiscent of dill
(S)-(+) spearmint

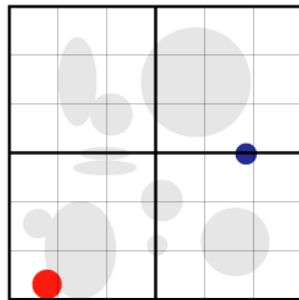
ACHS.edu

AMERICAN COLLEGE OF HEALTHCARE SCIENCES

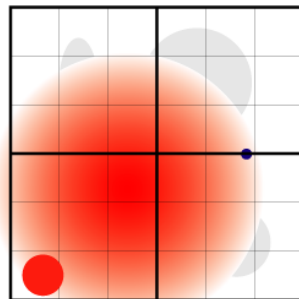


Manmade Emphasis: Oregano

Manmade Emphasis Thyme



natural Oregano:
50% Phenols
5% Caryophyllen



'improved Oregano'
60% Phenols
traces of Caryophyllen

irritant qualities
enhanced

ACHS.edu

AMERICAN COLLEGE OF HEALTHCARE SCIENCES



Pharmacodynamics of EOs

- Drug molecules work by binding or interacting with target molecules
- Essential oil molecules are active with several types of target molecules, these include:
 - Cell membranes, neuronal and muscular ion channels, neurotransmitter receptors, G-protein coupled and second messengers, enzymes, even DNA molecules (rarely)

ACHS.edu

AMERICAN COLLEGE OF HEALTHCARE SCIENCES



Selectivity

- Lock and Key Model
- In reality, drugs, including EOs, bind to many sites
- Want some selectivity or drug is not useful
- EOs generally have low selectivity
- Diverse components of EOs show potent selective effects. Also, the large number of constituents found in EOs allow **one 'drug' to address many aspects of one disease**, e.g. nervous anxiety and eczema
- Lavender can reduce anxiety on CNS level and provide topical anti-inflammatory actions

ACHS.edu

AMERICAN COLLEGE OF HEALTHCARE SCIENCES



Primary Physiological Actions of Essential Oils

- Antibacterial, antimicrobial, antiviral
- Anti-inflammatory, anti-spasmodic
- Antinociceptive (analgesic), anesthetic
- Chemopreventative (cytoprotective/cytotoxic)
- Emmenagogue
- Skin penetration and regeneration

ACHS.edu

AMERICAN COLLEGE OF HEALTHCARE SCIENCES



Antibacterial/Antimicrobial

Here are top picks for antibacterial oils that show biological activity against methicillin-resistant *Staphylococcus aureus*:

- Bay *Laurus nobilis*
- Geranium *Pelargonium graveolens*
- Lavender *Lavandula angustifolia*
- Rose *Rosa damascena*
- Tea Tree *Melaleuca alternifolia*

ACHS.edu

AMERICAN COLLEGE OF HEALTHCARE SCIENCES

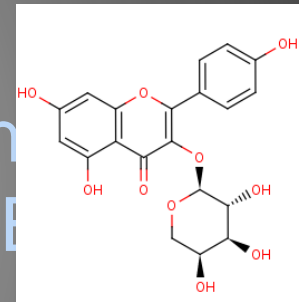


Antibacterial

Bay *Laurus nobilis* Essential Oil

A 2008 study isolated two compounds from bay oil. Both showed strong antibacterial activity not only against methicillin resistant

Staphylococcus aureus, but also against *vancomycin-resistant enterococci* (VRE).



These two compounds from bay were found to not only have a direct action against MRSA, but also were able to enhance the effect of anti-MRSA drugs (synergism).

ACHS.edu

AMERICAN COLLEGE OF HEALTHCARE SCIENCES



Antibacterial

Rose *Rosa damascena* Essential Oil

A March 2010 study showed positive antimicrobial activity of rose *Rosa damascena* against *Candida albicans* and methicillin-resistant *Staphylococcus aureus*.*



ACHS.edu

AMERICAN COLLEGE OF HEALTHCARE SCIENCES



Antibacterial

Tea Tree *Melaleuca alternifolia* Essential Oil

Antibacterial activity of Australian tea tree oil (TTO) compared to cajuput oil niaouli oil, kanuka oil, manuka oil, and eucalyptus oil.

Tea tree oil was the highest with a Minimum Inhibitory Concentration (MIC) value of 0.25% with different bacteria that cause a wide range of infections.*



ACHS.edu

AMERICAN COLLEGE OF HEALTHCARE SCIENCES



Antibacterial Cinnamon *Cinnamomum Zeylanicum*



ACHS.edu

AMERICAN COLLEGE OF HEALTHCARE SCIENCES



Antibacterial Activity of Cinnamon *Cinnamomum Zeylanicum* Essential Oil

- A study published in March 2014 showed *Cinnamomum zeylanicum* had antibacterial activity towards 7 pathogenic strains:
 - *H. pylori*
 - *E. coli*
 - *Proteus* sp
 - *Bacillus cereus*
 - *K. pneumoniae*
 - *C. freundii*
 - *S. aureus*
- Researchers felt these results showed promise for using Cinnamon EO for gastro-intestinal disorders.

ACHS.edu

AMERICAN COLLEGE OF HEALTHCARE SCIENCES



Antibacterial Activity of Cinnamon Cinnamomum Zeylanicum Essential Oil

- An in vitro study presented at the 2014 ISEO in Istanbul, Turkey.
- Found the essential oils of clove, cinnamon, and thyme to be effective against several strain of multi-drug resistant strains of bacteria.
- The researchers felt using essential oils to produce an additive effect on antibacterial drugs may be the direction of research.

ACHS.edu

AMERICAN COLLEGE OF HEALTHCARE SCIENCES



Immunomodulatory Effects of Cinnamon *Cinnamomum Zeylanicum* Essential Oil

- A study published in 2014 showed the immunomodulatory effects of Cinnamon essential oil in immune compromised mice.
- Results showed administration of Cinnamon essential oil showed a stimulatory effect on several aspects of immunity.
- Even in induced lethal E. coli abdominal sepsis in the immune compromised mice.

ACHS.edu

AMERICAN COLLEGE OF HEALTHCARE SCIENCES



Anticancer Activity of Cinnamon *Cinnamomum Zeylanicum*

- An in vitro study in 2010 compared 10 essential oils for their antibacterial and anticancer activity.
- Thyme, cinnamon, and rose had strongest antibacterial activity against *P. acnes*.
- Cinnamon had the strongest anticancer effect towards the 3 human cancer cell lines:
 - A-549 (lung carcinoma), PC-3 (prostate cancer),
 - MCF-7 (breast cancer)

ACHS.edu

AMERICAN COLLEGE OF HEALTHCARE SCIENCES



Effects of Blocking Ca²⁺ Channel

- These channels occur in cardiac muscle, smooth muscle, and neurons.
- The nerve endings responsible for detecting pain use calcium ion channels to transmit pain messages.
- They can be deactivated if channel is blocked.
- Peppermint sensitizes cold-sensitive neurons to give cooling effect.
- Local anesthetic activity of both isomers of menthol are from calcium ion channel blocking.
- Eugenol in clove is anesthetic.

ACHS.edu

AMERICAN COLLEGE OF HEALTHCARE SCIENCES

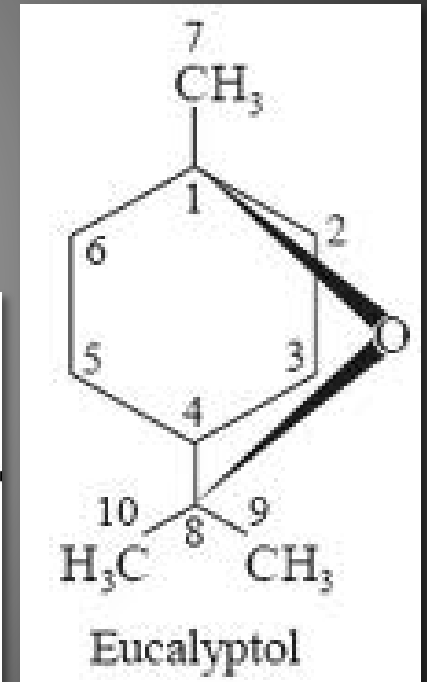
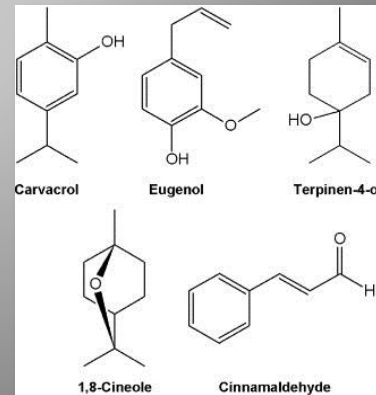


Anti-Inflammatory/Antinociceptive

Anti-inflammatory essential oils are capable of counteracting or suppressing inflammation.

Antinociceptive essential oils are capable of reducing sensitivity to painful stimuli (also referred to as analgesic).

Cineole, also known as eucalyptol, is the active constituent.



ACHS.edu

AMERICAN COLLEGE OF HEALTHCARE SCIENCES



Basil *Ocimum basilicum* Essential Oil



ACHS.edu

AMERICAN COLLEGE OF HEALTHCARE SCIENCES

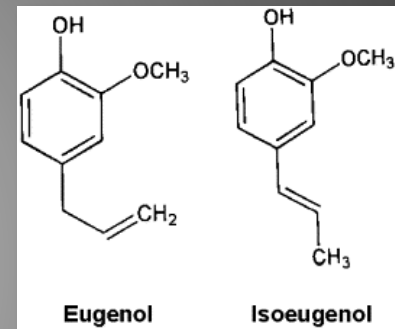


Analgesic and Anti-Inflammatory Basil *Ocimum basilicum* Essential Oil

In a Brazilian study, basil *Ocimum gratissimum* was shown to be antinociceptive.

In specific, it's thought the eugenol in basil is the active constituent as it can inhibit nerve conduction and prostaglandin biosynthesis.

In addition, 1,8 cineole, another major active constituent in basil essential oil, has both anti-inflammatory and antinociceptive properties.*



ACHS.edu

AMERICAN COLLEGE OF HEALTHCARE SCIENCES



Analgesic and Anti-inflammatory *Basil Ocimum Basilicum* Essential Oil

- A study presented at the 2014 International Symposium on Essential Oils.
- Showed estragole (methyl chavicol) and one of its isomers, anethole, both showed significant anti-inflammatory activity.
- Estragole has been shown in other studies to also have anticonvulsant and anesthetic activity.

ACHS.edu

AMERICAN COLLEGE OF HEALTHCARE SCIENCES



Anti-Spasmodic Effect

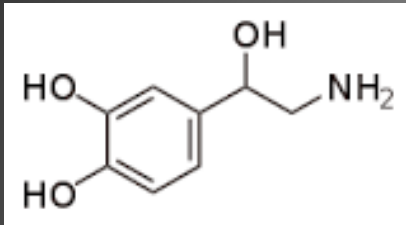
- Also due to Ca^{+2} Ion Channel blockage
- Can reduce hypertension
- Reduce smooth muscle contractions in heart
- Reduced smooth muscle contractions in intestines
- Prevent skeletal muscle contractions
- Methyl chavicol
- Anethole
- Esters – linalyl acetate, isobutyl angelate
- Linalool

ACHS.edu

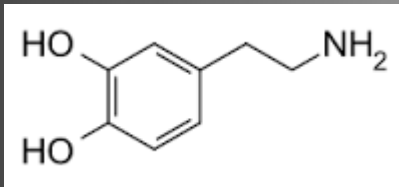
AMERICAN COLLEGE OF HEALTHCARE SCIENCES



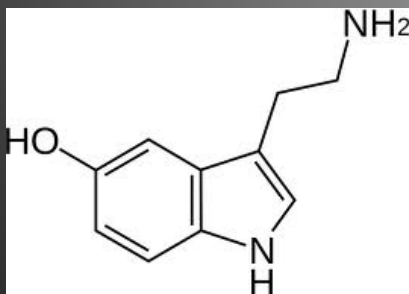
Plant Secondary Metabolites Mimic Neurotransmitters



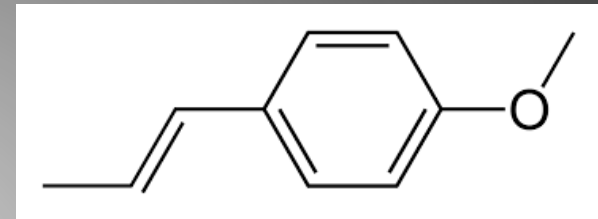
noradrenaline



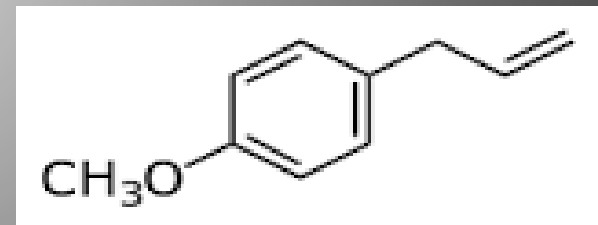
dopamine



serotonin



anethole



methyl chavicol

ACHS.edu

AMERICAN COLLEGE OF HEALTHCARE SCIENCES



Other Areas of Application

- **Cytotoxicity:** potential treatment of growing cancers or tumors
- **Cytoprotective:** liver and skin
- **Inflammation:** mediating the inflammation cascade. Wound healing
- **Antioxidant:** radical scavengers. Prevent oxidative damage

ACHS.edu

AMERICAN COLLEGE OF HEALTHCARE SCIENCES



Chemopreventive

Chemopreventive is an essential oil helpful in preventing, slowing, stopping, healing, or reversing cancer.



ACHS.edu

AMERICAN COLLEGE OF HEALTHCARE SCIENCES



Chemopreventive Essential Oils

Here are top picks for chemopreventive essential oils:

- Clove *Syzygium aromaticum*
- Lavender *Lavandula angustifolia*
- Sandalwood *Santalum album*
- Frankincense *Boswellia carterii*

ACHS.edu

AMERICAN COLLEGE OF HEALTHCARE SCIENCES



Clove *Syzygium aromaticum* Essential Oil



ACHS.edu

AMERICAN COLLEGE OF HEALTHCARE SCIENCES



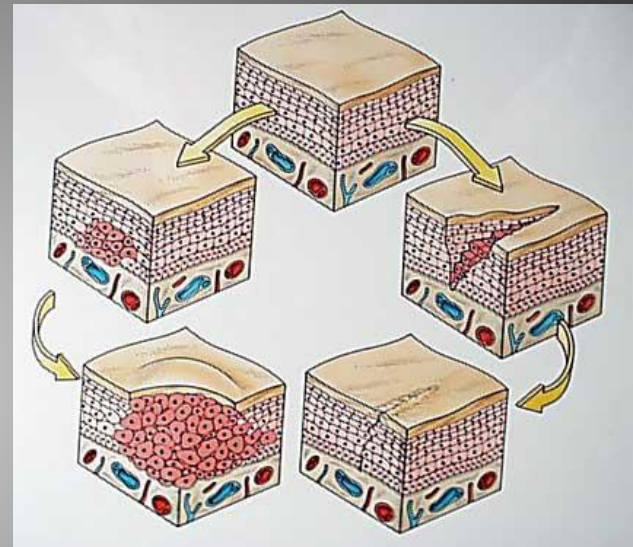
Chemopreventative

Clove *Syzygium aromaticum* Essential Oil

Effective in reducing abnormal cell development leading to malignant cancer.

Caused overall decline in the number of multiplying cancer cells and also

boosted the numbers of cancer cell deaths.*



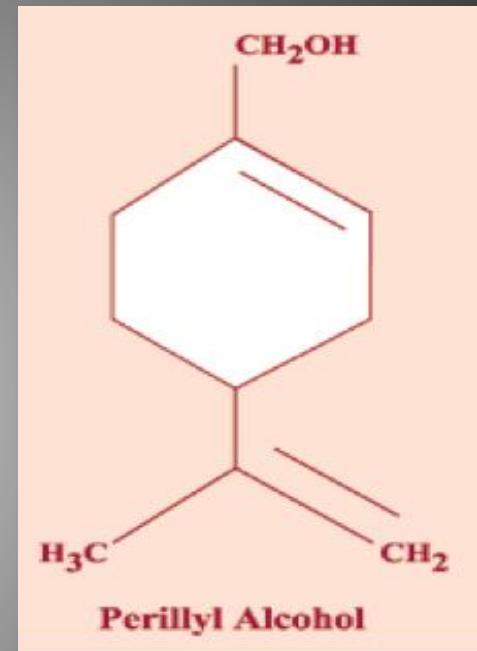
ACHS.edu

AMERICAN COLLEGE OF HEALTHCARE SCIENCES



Chemopreventative Lavender *Lavandula angustifolia* Essential Oil

Monoterpenes-perillyl alcohol shown to help prevent breast, lung, and liver cancers; tumor developments in leukemia; and may decrease tumor actions in pancreatic cancer.



ACHS.edu

AMERICAN COLLEGE OF HEALTHCARE SCIENCES



Sandalwood *Santalum album* Essential Oil



ACHS.edu

AMERICAN COLLEGE OF HEALTHCARE SCIENCES



Chemopreventative

Sandalwood *Santalum album* Essential Oil

Sandalwood *Santalum album* significantly reduced the incidence of skin papillomas (or skin tags) by 67% and multiplicity of skin papillomas by 96%.



ACHS.edu

AMERICAN COLLEGE OF HEALTHCARE SCIENCES



Chemopreventative Frankincense *Boswellia Carterii*

- Found to induce apoptosis / be anti-proliferative in vitro for breast cancer, prostate cancer, and bladder cancer cell lines.
- Was shown Frankincense EO disrupted cell metabolism and thus causing cell death.
- In the case of bladder cancer, it was demonstrated frankincense had no ill effect on health bladder cells.
- Preliminary research has looked at two Boswellia EOs to suppress the activation of cancer signaling molecules.

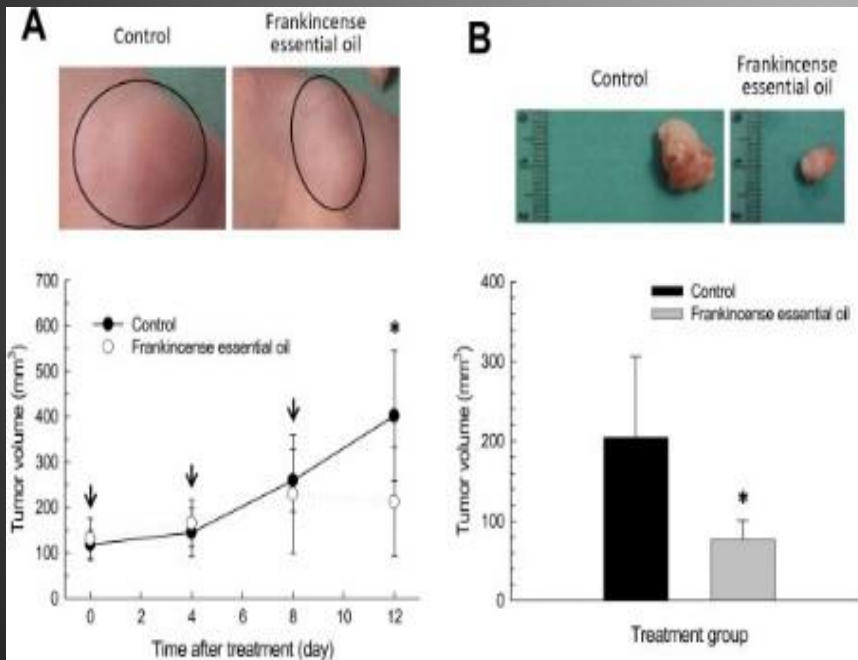
ACHS.edu

AMERICAN COLLEGE OF HEALTHCARE SCIENCES



Chemopreventative Frankincense *Boswellia Carterii*

- Shown to suppress pancreatic tumor growth in mice using human pancreatic tumor xenograph.
- “30 μ l Frankincense essential oil plus 70 μ l PBS (phosphate buffered saline) through subcutaneous injections. Animals were treated every 4 days; and a total of 3 injections were administered.”



ACHS.edu

AMERICAN COLLEGE OF HEALTHCARE SCIENCES



Internal Use of Essential Oils

- Oral administration of essential oils is common in Europe.
- A 2009 British study used capsules of lavender to study internal administration efficacy for anxiolytic effects.
 - Showed interesting, positive results.
 - Lavender reached the blood stream in 15 min.
 - Left blood stream in 60 min.



ACHS.edu

AMERICAN COLLEGE OF HEALTHCARE SCIENCES



American College of Healthcare Sciences

Amanda Lattin MA, MH, RA



For questions or comments,
please contact me...

amandalattin@achs.edu

www.achs.edu

www.terracinaherbals.com

ACHS.edu

AMERICAN COLLEGE OF HEALTHCARE SCIENCES



References

- Bowles, E. J. (2003). *The Chemistry of Aromatherapeutic Oils* (3rd ed.). Crows Nest, Australia: Allen & Unwin, 52.
- Bradley, B., Brown, S., Chu, S., & Lea, W. (2009). Effects of orally administered lavender essential oil on responses to anxiety-provoking film clips. *Hum. Psychopharmacol Clin Exp.*, 24: 319–330.
- Buck, L.B. (2005). Unraveling the sense of smell (Nobel lecture). *Angew Chem Int Ed Engl.*, 26;44(38):6128-40.
- Gomez-Marin, A., Duistermars, B., Frye, M., & Louis, M. (2010). Mechanisms of Odor-Tracking: Multiple Sensors for Enhanced Perception and Behavior. *Front Cell Neurosci.*, 4: 6. Published online 2010, March 31.
- Kim, Y., Kim, M., Kim, H., & Kim, K. (2009). Effect of lavender oil on motor function and dopamine receptor expression in the olfactory bulb of mice. *J Ethnopharmacol.* 17;125(1):31-5. doi: 10.1016/j.jep.2009.06.017. Epub 2009 Jun 26.
- Kurt, S. (2011). *The Healing Intelligence of Essential Oils*. Healing Arts Press, 13-20, 48-51.

References

- Li, A., Gong, L., & Xu, F. (2011). Brain-state-independent neural representation of peripheral stimulation in rat olfactory bulb. *Proc Natl Acad Sci U S A.*, (12):5087-92. doi: 10.1073/pnas.1013814108. Epub 2011 Feb 14.
- Rinaldi, A. (2007). The scent of life: The exquisite complexity of the sense of smell in animals and humans. *EMBO reports*, 8, 629-633 [Original image credit: Karolinska Institutet and Nobel Foundation, Stockholm, Sweden] Retrieved from <http://www.nature.com/embor/journal/v8/n7/full/7401029.html>
- Rinaldi, A. (2007). The scent of life: The exquisite complexity of the sense of smell in animals and humans. *EMBO reports*, 8, 629-633.
- Schnaubelt, K. (1998). *Advanced Aromatherapy, The Science of Essential Oil Therapy*. Inner Traditions International, Ltd., 53-56.
- Seol, G.H., Lee, Y.H., Kang, P., JH, Y., Park M., & Min, S.S. (2013). Randomized Controlled Trial for *Salvia sclarea* or *Lavandula angustifolia*: Differential Effects on Blood Pressure in Female Patients with Urinary Incontinence Undergoing Urodynamic Examination. *J Altern Complement Med.*, Jan 29.

References

- Slima, A., Ali, M., Barkallah, M., Traore, A., Boudawara, T., Allouche, N., et al. (2013). Antioxidant properties of *Pelargonium graveolens* L'Her essential oil on the reproductive damage induced by deltamethrin in mice as compared to alpha-tocopherol. *Lipids in Health and Disease*, 12:30 doi:10.1186/1476-511X-12-30. Published: 7 March 2013.
- Wu, Y., Zhang, Y., Xie, G., Zhao, A., Pan, X., Chen, T., et al. (2012). The metabolic responses to aerial diffusion of essential oils. SourceSchool of Pharmacy, Shanghai Jiao Tong University, Shanghai, China. PLoS One. 2012;7(9):e44830. doi: 10.1371/journal.pone.0044830. Epub 2012 Sep 12.
- N. Balekar, S. Bodhankar, V. Mohan, P. Thakurdesai. (2014) Modulatory activity of a polyphenolic fraction of *Cinnamomum zeylanicum* L. bark on multiple arms of immunity in normal and immunocompromised mice. *J App Pharm Sci*. 4(7): 114-122. doi: 10.7324/JAPS.2014.40720
- Zouheyr, H. A. D. R. I., Rachida, A. L. L. E. M., & Perry, M. G. (2014). Effect of essential oil of *Cinnamomum zeylanicum* on some pathogenic bacteria. *African Journal of Microbiology Research*, 8(10), 1026-1031.

ACHS.edu

AMERICAN COLLEGE OF HEALTHCARE SCIENCES



References

- Ni X, Suhail MM, Yang Q, Cao A, Fung KM, Postier RG, Woolley C, Young G, Zhang J, Lin HK. (2012) [Frankincense essential oil prepared from hydrodistillation of Boswellia sacra gum resins induces human pancreatic cancer cell death in cultures and in a xenograft murine model.](#) BMC Complement Altern Med. 2012 Dec 13;12:253.
- [Chen Y, Zhou C, Ge Z, Liu Y, Liu Y, Feng W, Li S, Chen G, Wei T.](#) (2013) **Composition and potential anticancer activities of essential oils obtained from myrrh and frankincense.** [Oncol Lett.](#) 2013 Oct;6(4):1140-1146.
- Mitsuhiro Denda. (2014) Newly Discovered Olfactory Receptors in Epidermal Keratinocytes Are Associated with Proliferation, Migration, and Re-Epithelialization of Keratinocytes. *Journal of Investigative Dermatology* (134): 2677–2679. doi:10.1038/jid.2014.229

References

- Francielle Maria De Souza Silva Comar, et. al.(Sept, 2014) Effect of Estragole on acute inflammatory response. International Symposium on Essential Oils, Istanbul, Turkey.
- Kamilla Acs, et. al. (Sept, 2014) In vitro antibacterial activity of essential oils against multidrug resistant strains. International Symposium on Essential Oils, Istanbul, Turkey.
- Ansoleaga, B., Garcia-Esparcia, P., Llorens, F., Moreno, J., Aso, E., & Ferrer, I. (2013). Dysregulation of brain olfactory and taste receptors in AD, PSP and CJD, and AD-related model. *Neuroscience*, 248, 369-382.
- Garcia-Esparcia, P., Schlüter, A., Carmona, M., Moreno, J., Ansoleaga, B., Torrejón-Escribano, B., ... & Ferrer, I. (2013). Functional genomics reveals dysregulation of cortical olfactory receptors in Parkinson disease: novel putative chemoreceptors in the human brain. *Journal of Neuropathology & Experimental Neurology*, 72(6), 524-539.

References

- Belen Ansoleaga, et. al. (2014) Decrease in olfactory and taste receptor expression in the dorsolateral prefrontal cortex in chronic schizophrenia. *Journal of Psychiatric Research*, October 2, 2014.
- Miller, J. E. K., Granados-Fuentes, D., Wang, T., Marpegan, L., Holy, T. E., & Herzog, E. D. (2014). Vasoactive Intestinal Polypeptide Mediates Circadian Rhythms in Mammalian Olfactory Bulb and Olfaction. *The Journal of Neuroscience*, 34(17), 6040-6046.
- Primeaux, S. D., Braymer, H. D., & Bray, G. A. (2013). High fat diet differentially regulates the expression of olfactory receptors in the duodenum of obesity-prone and obesity-resistant rats. *Digestive diseases and sciences*, 58(1), 72-76.

References

- Zouheyr, H. A. D. R. I., Rachida, A. L. L. E. M., & Perry, M. G. (2014). Effect of essential oil of *Cinnamomum zeylanicum* on some pathogenic bacteria. *African Journal of Microbiology Research*, 8(10), 1026-1031.
- Balekar, N., Bodhankar, S., Mohan, V., & Thakurdesai, P. A. (2014). Modulatory activity of a polyphenolic fraction of *Cinnamomum zeylanicum* L. bark on multiple arms of immunity in normal and immunocompromised mice. *Journal of Applied Pharmaceutical Science Vol, 4(07)*, 114-122.
- Kippenberger, S., Havlíček, J., Bernd, A., Thaçi, D., Kaufmann, R., & Meissner, M. (2012). 'Nosing Around'the human skin: What information is concealed in skin odour?. *Experimental dermatology*, 21(9), 655-659.

- Busse, D., Kudella, P., Grüning, N. M., Gisselmann, G., Ständer, S., Luger, T., ... & Benecke, H. (2014). A Synthetic Sandalwood Odorant Induces Wound-Healing Processes in Human Keratinocytes via the Olfactory Receptor OR2AT4. *Journal of Investigative Dermatology*, 134(11), 2823-2832.
- Zu, Y., Yu, H., Liang, L., Fu, Y., Efferth, T., Liu, X., & Wu, N. (2010). Activities of ten essential oils towards *Propionibacterium acnes* and PC-3, A-549 and MCF-7 cancer cells. *Molecules*, 15(5), 3200-3210.